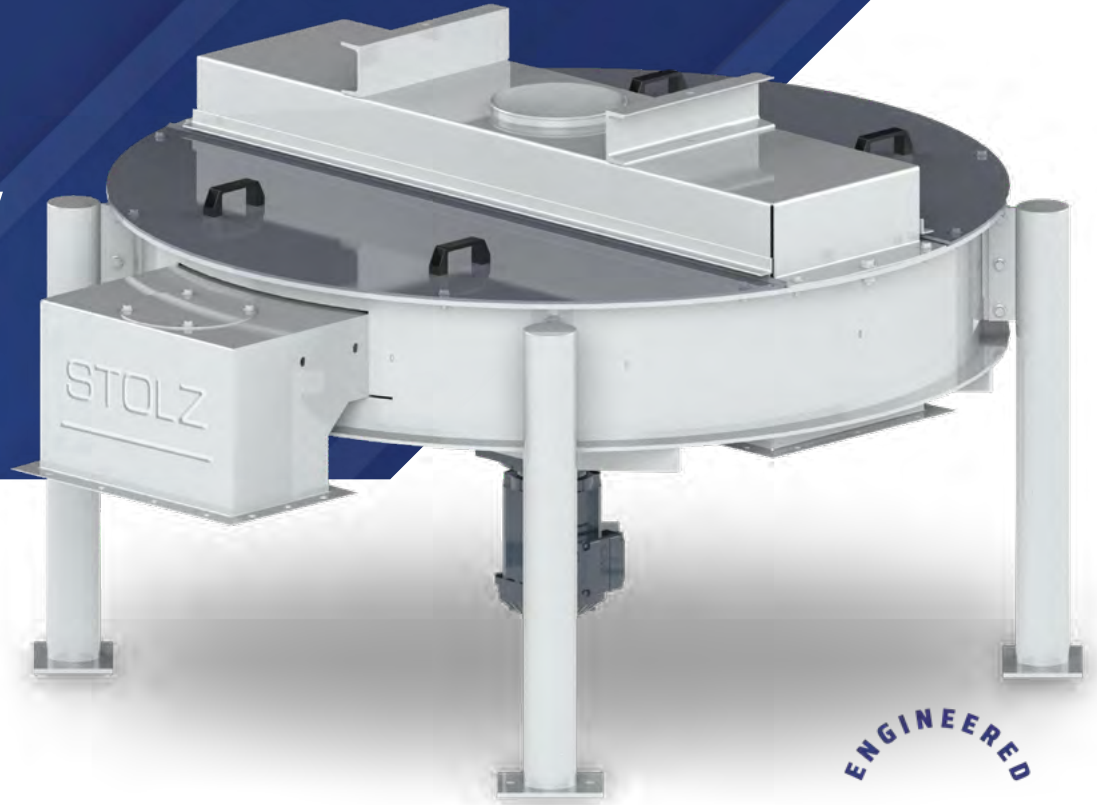


STOLZ

Rotary Sifters

PTAA • PTAV

PTAVP



ENGINEERED
TO YOUR NEEDS

STOLZ circular centrifugal sifters are used to provide a centrifugal segregation for:

- Sieving before grinding.
- Safety sieving after grinding and before mixing.
- Pellets sieving for fines and broken grains extraction.

VARIATIONS

- Side outlet with deflector in PTAA
- Central outlet in PTAV
- Central outlet with bypass in PTAVP

OPTIONS

- ATEX compliance
- Outlet zone to PTAV and PTAVP

FEATURES

- Sealed machine with circular movement for a segregation by centrifugal force
- Suitable for all types of pellets or dry grains sieving
- Internal flow adjustment at inlet
- Scrapping bottom with fines outlet
- Rotor with scrapping blades assembled at end shaft of a vertical gear-motor
- Screen mesh according to material specifications

Stolz is a proud part of the global Desmet organization

OPERATING PRINCIPLE

Material to be sieved is introduced at inlet.

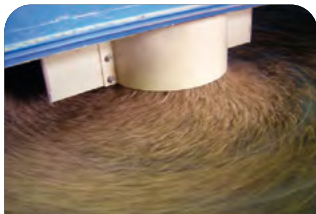
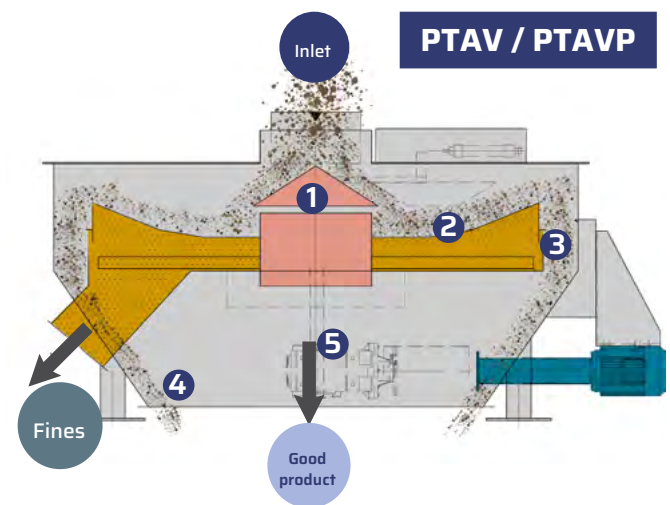
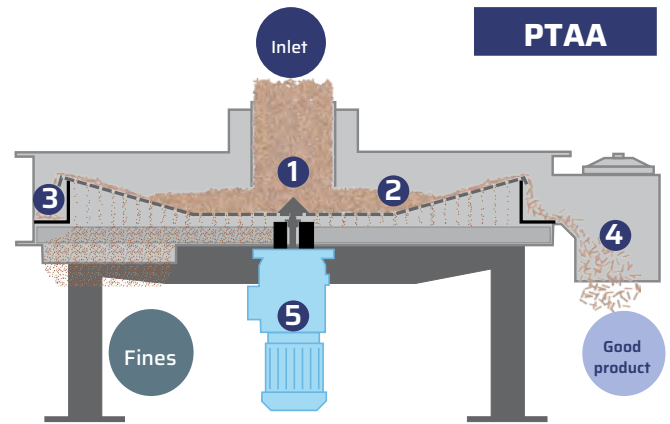
A cone **1** dispatches the product over the rotary sieving screen. **2**

By a centrifugal effect, the product layer slides to the edge while dropping out the fines parts : meal, crumbs...

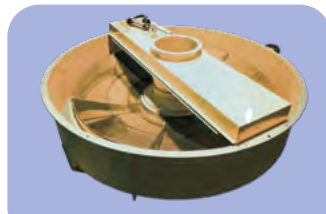
The sieved product then falls into a circular «passage» , **3** then into the «good product» discharge outlet. **4**

After crossing the screen the fines are collected on the bottom by scrappers and are rejected to the «fines» discharge outlet.

The rotor is driven by a gear-motor **5** located in the centre with a shaft directly supporting the rotor.



Product inlet



Centrifugal screen

USUAL REACHED CAPACITIES*

Type	Pellets Ø4 mm / SW 0.5	Pellets Ø8 mm / SW 0.5	Number of screens
PTAA 16	12 t/h	25 t/h	1
PTAA 25	25 t/h	80 t/h	1
PTAV 20	50 t/h	75 t/h	1
PTAV 25	80 t/h	100 t/h	1
PTAVP 25	80 t/h	100 t/h	1
PTAVP 30	120 t/h	150 t/h	1

* with max. 5% fines

STOLZ

82 Route de Boisjean • 62170 • Wailly Beaucamp • France

Tél : +33 (0)3 21 90 05 05 • contact.stolz@desmet.com

www.desmet.com/stolz

/Stolz